



After



Before

Manhole Rehabilitation

Cementitious & Epoxy Resin Coatings

Quikshot trading as NZ Lining
580D Rosebank Rd, Avondale, Auckland 1026
PO Box 71171, Rosebank, Auckland 1348
Phone: 09 820 0407 Email: info@nzlining.co.nz



www.nzlining.co.nz



NZ Lining have propriety coating systems suitable for the rehabilitation of manholes.

Our Cementitious and Epoxy Coating systems eliminates inflow and infiltration (I/I) and can provide structural reinforcement for sanitary sewer manholes.

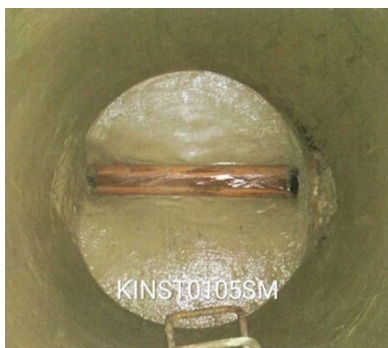
We can assist from the initial damage analysis through to the execution of the repair. There are many factors to consider when it comes to selecting the appropriate rehabilitation method. These include substrate condition and whether there are high levels of sulphide (H₂S) or moisture content - these factors play a huge role in material selection.

The number of manholes and sewer structures in need of repair is steadily increasing. Leaks in the wastewater system cause infiltration which puts excessive strain on our wastewater treatment plans, reducing their treatment performance significantly.



Cementitious Coating

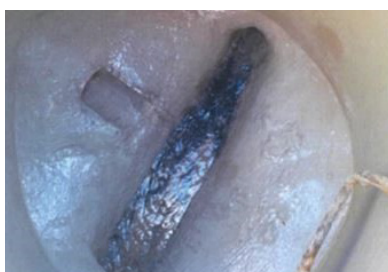
We use a calcium aluminate cement mortar coating that serves as a chemical resistance protective barrier between the substrate and the corrosive environment. The coating maintains a high PH level and limits the growth of bacteria prolonging the service life of the substrate approximately 4 to 5 times over that of standard cement coatings. The coating can be either sprayed or trowled.



Epoxy resin coating

Our propriety epoxy coating system have excellent chemical-resistant properties. They are strong and are unaffected by humidity, making them ideal for applying in damp substrates.

The resin bonds directly to the substrate by the use of a special primer. The coating is generally sprayed at dry film thicknesses of 60 to 250 micro mm.



Advantages

Key advantages of our coating system are:

- Inhibits bacterial activity
- Neutralises sulfuric acid
- Readily adheres to damp concrete
- Provides long term corrosion protection
- Structural reinforcing - independent testing shows an increase in compressive strength of concrete of up to 20%.

Quikshot trading as NZ Lining

580D Rosebank Rd, Avondale, Auckland 1026 PO Box 71171, Rosebank, Auckland 1348

Phone: 09 820 0407 Email: info@nzlining.co.nz Web: nzlining.co.nz